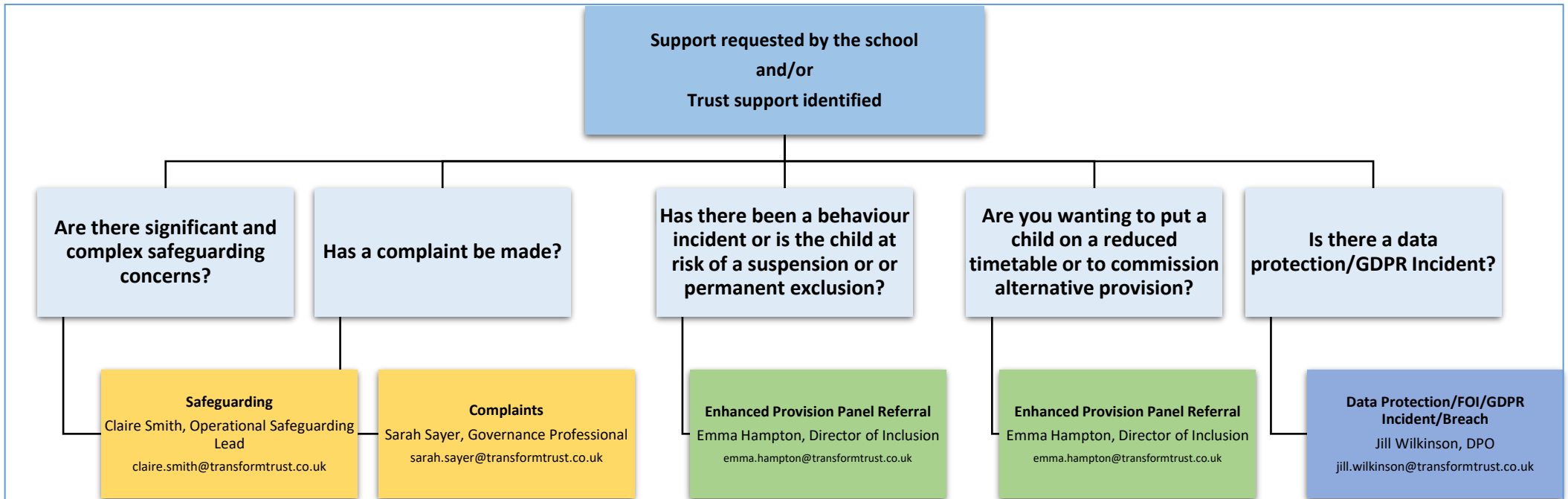
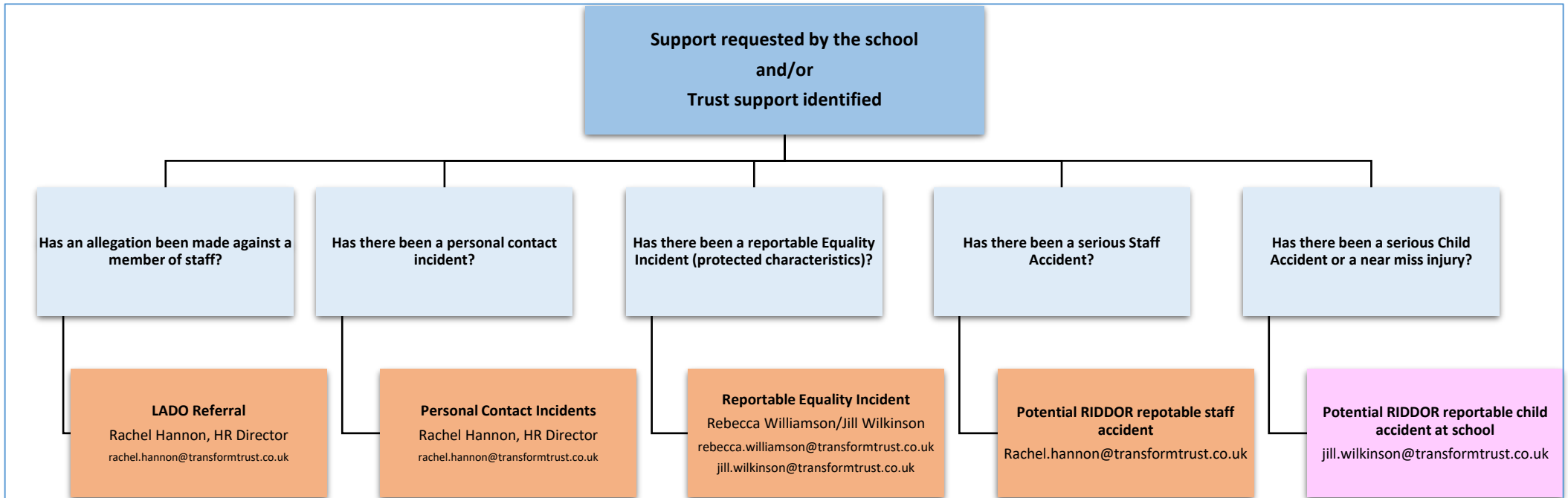


Transform Trust School Safeguarding Pathway of Support – September 2023



Safeguarding Support Intent	Complaints Support Intent	Enhanced Provision Panel Support Intent	Enhanced Provision Panel Support Intent	Data Protection/GDPR Support Intent
<ul style="list-style-type: none"> To provide support to DSLs with safeguarding advice. To support DSLs with external case conference preparation. To support escalation processes where appropriate. To review themes and distribute relevant guidance to schools. To identify mini case conference if needed. 	<ul style="list-style-type: none"> To provide advice and determine whether school or Trust complaint. To advise on appropriate process if school complaint. To identify Trust Case Worker. To investigate and respond to any Trust complaint. To support schools with any LA, ESFA or Ofsted Complaints. 	<ul style="list-style-type: none"> To provide advice on behaviour strategies. To support schools with children who are at risk of exclusion or who have had a fixed term exclusion. To ensure provision meets the needs of children at every level, therefore reducing the need for exclusion. To provide schools with a process for self-review and reflection on provision. To share best practice. 	<ul style="list-style-type: none"> To support schools with children who they wish to put on a reduced timetable. To support schools with commissioning alternative provision To ensure there are clear expectations and exit strategies in place. 	<ul style="list-style-type: none"> To provide advice on data protection queries. To advise on whether there has been a breach and actions needed. To contact the ICO on any confirmed data protection breaches. To share practice.
Contact Claire Smith via telephone or email.	Report via: Email to Sarah Sayer upon receipt	Report via: Reporting a Suspension Reporting a Permanent Exclusion	Report via: Enhanced Provision Panel	Report via: Telephone or mail to JW same day as incident.

Transform Trust School Safeguarding Pathway of Support



LADO Support Intent	Personal Contact Incident Support Intent	Reportable Equality Incident Support Intent	Reportable Staff Accident at Work Support Intent	Reportable Child Accident at School Support Intent
<ul style="list-style-type: none"> • Direct HT's in the process of referral (if relevant) and next steps when allegations against staffing are made. • Work within LADO protocols and attend any meetings with HT. • Support and direct on any follow-up actions from LADO process. 	<ul style="list-style-type: none"> • Enable TT and schools to meet their H&S obligations regarding reporting and recording incidents where staff are harmed at work. • Report data to Unions and take action as appropriate with HSE. 	<ul style="list-style-type: none"> • Support schools with curriculum content where needed. 	<ul style="list-style-type: none"> • Support schools with reporting to RIDDOR where appropriate. • Support schools with support needed for staff member. • Report data to Unions and take action as appropriate with HSE. 	<ul style="list-style-type: none"> • Support schools with reporting to RIDDOR where appropriate. • Support schools with any health & safety concerns with site. • Report data to Unions.
Report via: Direct to RH via phone/email.	Report via: Scholarpack	Report via: Reporting an Equality Incident	Report via: Scholarpack	Report via: Reporting any injury or near miss in school