



At Transform we value and invest in our Governance Professionals. They provide an invaluable contribution to the efficiency, effectiveness, productivity and compliance of our different Governing Boards across Governance and Safeguarding. Our Governance Professionals work closely and in partnership with our Chairs, Governors and Headteachers to ensure they are focused on their core strategic priorities. They provide expert advice and guidance on a range of statutory duties and other functions and deliver high quality administrative support that makes everything work smoothly.

**Eyes On, Hands Off:**  
How to empower your team and get out of their way

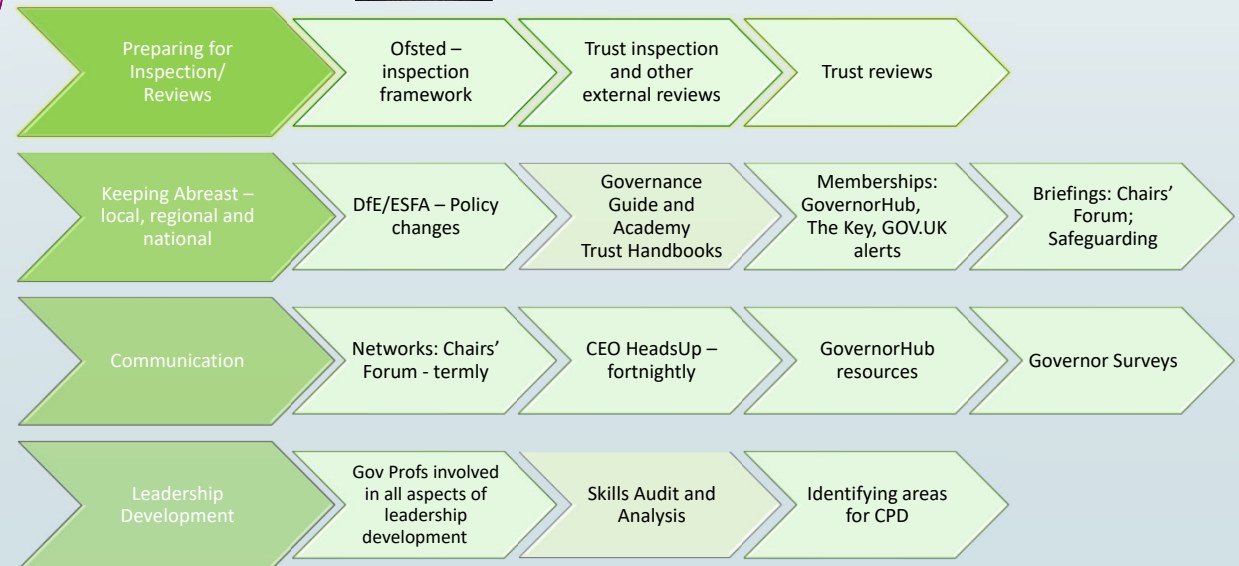
**Professional Role of a Governance Professional:**



**The administrative role of a Governance Professional:**



**The Supportive Role of a Governance Professional:**



Governing roles at Transform – the different layers
<b>Trust Board</b>
Steve Cox, CFO and Jill Wilkinson, COO, act in the capacity of professional governance support to our Trust Board, providing a range of advice and guidance on finance and governance. Ruth Palmer is the minute-taker for the Trust Board.
<b>Trust Board Committees</b>
Ruth Palmer is the minute-taker for our Trust Board Committees.
<b>Local Governing Bodies</b>
We have a team of Governance Professionals who support all our LGBs. They are also responsible for our Chairs Forum and co-ordinating our training offer.
<b>Transform Guardians (Safeguarding)</b>
We have several working groups covering all aspects of safeguarding – Mary Farmer is our Governance Professional for all these groups.

**Transform Board**



Jill Wilkinson



Steve Cox

**Local Governing Boards**



Sarah Sayer



Ruth Palmer



Kim Taaffe



Mary Farmer

**Aim: To always be professional in our 'expert' support and guidance and know our schools well**